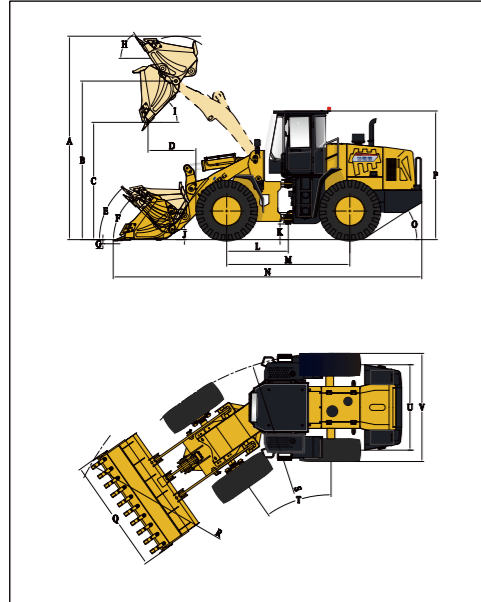


## DIMENSIONS

All dimensions are approximate. Dimensions may vary with bucket and tire choice. Refer to operating specifications.



NO.	DESCRIPTION	UNIT	STD	High Dump
A	Overall Height – Bucket Raised	mm	5275	5637
B	Bucket Pin Height at Max. Lift	mm	4119	4520
C	Dump Clearance at Max. Lift (45°)	mm	3062	3458
D	Reach at Max. Lift and 45° Dump	mm	1276	1230
E	Rack Back Angle at Carry	°	48	46
F	Rack Back Angle at Ground	°	45	42
G	Digging Depth	mm	50	50
H	Rack Back Angle at Max. Lift	°	53	50
I	Dump Angle at Max. Lift	°	45	45
J	Carry Height	mm	400	400
K	Ground Clearance	mm	409	409
L	Center Line of Front Axle to Hitch	mm	1615	1615
M	Wheel Base	mm	3230	3230
N	Overall Length	mm	8015	8230
O	Departure Angle	°	32	32
P	Height to Top of Cab	mm	3380	3380
Q	Overall Width over Bucket	mm	3000	3000
R	Min. Turning Radius over Bucket	mm	7170	7280
S	Min. Turning Radius over Tires	mm	6537.5	
T	Steering Angle – Left/Right	°	35	35
U	Width at Tread Center	mm	2240	2240
V	Overall Width over Tires	mm	2835	2835

## TECHNICAL PARAMETERS

Category	Parameter	Value
BASIC	Bucket Capacity	3.0m³
	Rated Payload	5000kg
	Operating Weight	16800±300kg
	Traction Force	155±3kN
	Breakout Force	170±3kN
	L×W×H	8015(8230) ×3000×3380
ENGINE	Maker/Model	WEICHA/WD10G220E21
	Rated Power	162kW/2200rpm
	Maximum Torque	860N·m/1400-1600rpm
	Bore x Stroke (mm)	126×130mm
	No. of Cylinders /Displacement	6/9.726L
	Air Cleaner	Three Stage Air Cleaner
	Alternator	70Amp
	Battery	2-24V/120Ah
	Starting Motor	24V/7.5kW
	DRIVE TRAIN	Transmission Type
Shift Type		Mechanical Powershift Control
Pressure of Transmission		1.1-1.5MPa
Torque Converter Type		Single-stage, Duo-turbine, 4-element
Axles		Rigid (Front)&Oscillating (Rear)
Rear Axle Oscillation (°)		±10°
Differential		Conventional
Main Reducer		Spiral Bevel, 1-stage Reduction
Final Reducer		Planetary Reduction
Tire		23.5-25 L-3 16PR TT
BRAKE SYSTEM	Service Brake	Gas Push Oil Caliper Brake
	Setting Pressure	0.70-0.78MPa
	Parking Brake	Air Actuated Caliper Brake
STEERING SYSTEM	Emergency Brake	Air Actuated Caliper Brake
	Type	Hydraulic Load Sensing System
	Pump	176L/min-2200rpm
	System Pressure	15MPa
HYDRAULIC SYSTEM	Cylinder Type	Double Acting
	Steering Angle	±35°
	Type	Mechanical Shift Working Control
	Pump	110L/min-2200rpm
	Control Valve	2 Spool
SERVICE REFILL CAPACITY	System Pressure	16MPa
	Cycle Time (Sec)	11
	Fuel Tank (L)	285L
	Hydraulic Tank (L)	265/270(3rd Spool)L
	Crankshaft (L)	20L
	Transmission (L)	46L
	Front Axle/Rear Axle (L)	28L/28L

## CONFIGURATION

WEICHA Engine
LONKING Transmission
Mechanical Powershift Control
LONKING Axles (Dry type)
Mechanical Shift Working Control
Air Actuated Caliper Brake
ROPS&FOPS Cabin
Mechanical Instrument Panel
Warm-air Machine

## OPTIONAL

High Dump
Oil-bath Air Filter
Radial Tires
Limited Lifting Position
3rd Spool for Auxiliary Function
Sliding Cabin Window
Electric Heating Rear Window
Lockable Oil Tank Cap
Rear View Camera
Air Conditioner
Radio/MP3
Bucket(3 Piece Cutting Edges)
Rock Bucket(2.7m³)
Enlarged Bucket(3.5m³)
Coal Bucket(4.2m³)
Log Grapple
Grass Grapple
Side Tip Bucket
Marble Fork
Log Fork
Quick Hitch Coupler
Quick Hitch Bucket
4in1 Bucket(Quick Hitch Only)
Snow Blade(Quick Hitch Only)

# LONKING 龙工

## LG855N WHEEL LOADER

Efficiency Rules the Future



For more information on Lonking products,  
Please contact our local agent:

The following blank can be used for notes or comments.

- RATED POWER: 162kW/2200rpm
- BUCKET CAPACITY: 3.0 m³
- RATED PAYLOAD: 5000kg
- OPERATING WEIGHT: 16800kg/17000kg